

LONKING

Crawler bulldozer LG160



PT. MITRA TEKNINDO SEJATI

Jakarta

Galeri Niaga Mediterania 1
Jl. Pantai Indah Utara II Blok. X3 No. G8A-8B
Pantai Indah Kapuk - Jakarta Utara
Telp. 021 52393819

Tangerang I

Kawasan Industri Milenium Blok P2 No. 3
Jl. Pemda Tigaraksa, Sukamulya,
Cikupa, Tangerang - Banten
Telp. 021 59645008

Tangerang II

Kawasan Bizlink Citra Raya Blok O 08/20
Jl. Pemda Tigaraksa, Sukamulya
Cikupa, Tangerang - Banten

Bantaeng

Jl. Dusun Mawang, Desa Papanloe,
Pajukukang, Bantaeng Regency
Sulawesi Selatan

Surabaya

Jl. Raya Gilang 8, Gilang, Kec. Taman, Sidoarjo -
Jawa Timur 61257
Telp. 031 99794078

Makassar

Jl. Ir. Sutami, Pertamina (Pengisian Gas Elpiji)
PT. Pergudangan Permata Alam Blok B No. 10
Makassar - Sulawesi Selatan
Telp 04118037636

Samarinda

Jl. Ampera Pergudangan Mangkupalas Bisnis
Center Blok D20 Simpang Pasir
Palaran, Samarinda - Kalimantan Timur



+62 21 52393819

headoffice@mitrateknindosejati.com

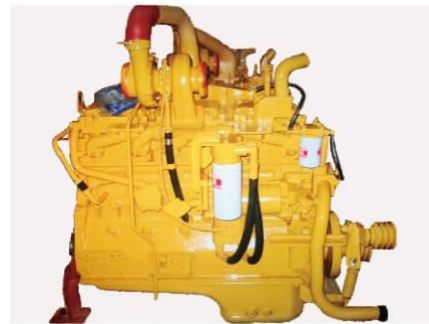
www.mitrateknindosejati.com

Main Specifications

Overall Specifications



标准型
Standard type



Quick response performance of Weichai diesel engine, shortening work Cycle time to improve work efficiency;



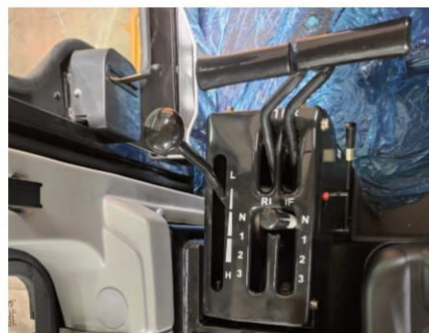
The machine has advanced structure, reasonable layout, and easy operation. Power, low fuel consumption, easy use and maintenance, quality Stable and reliable, high performance efficiency.



Use large-capacity fuel tank, the fuel tank volume reaches 300L, Continuous operation time is longer;



The seat is beautiful and easy to carry forward, backward, Up and down adjustment to better meet different driving needs To reduce the fatigue of drivers;



The operating mechanism is designed according to ergonomic principles, and the steering The joystick and throttle stick are placed sideways and concentrated Driver's left position improves driver's operation For comfort.



The planetary power shift transmission has three forward gears and Three reverse gears for fast shifting and steering. Centralized control of combined instrument panel, accurate and reliable;

Model		LG160(Standard type)
Engine		
Brand	Weichai power	
Model No.	WD10G178E25	
Power\revolution (Kw\rpm)	131kW/1850rpm	
Max. torque (N.m)	830	
Type	Water colling, Inline, Four stroke, Direct injection	
Fuel capacity (L)	300	
Piston Displacement (L)	9.726	
(g/kwh)	≤210	
Blade		
Standard Blade type	Straight tilt Blade	
Optional Blade type	Angle Blade	
Blade L x H (mm)	Straight tilt Blade: 3450x1130	
	Angle Blade: 4000x1040	
Dozing capacity (m3)	4.5/4.3	
Max. lift above ground (mm)	1100	
Max. drop below ground (mm)	540	
Scarifier type	Three teeth	
Track shoes		
Number of Track shoes (each side)	37	
Width of track shoes (mm)	510 (560/610)	
Pitch (mm)	203	
Track gauge (mm)	1880	
Carrier rollers (each side)	2	
Track rollers (each side)	6	
Ground pressure (Kpa)	58(55/50)	
Min. ground clearance (mm)	385	
Gradeability (°)	30	
Overall Specification		
Dimensions(mm)	(With Scarifier)	6265 × 3450 × 3360
Lx Wx H	(Without Scarifier)	5040 × 3450 × 3360
Total Weight (T)	17	
Water tank capacity	56	
(Km/h)Travel speed\Forward	3.29; 5.82; 9.63	
(Km/h)Travel speed\Reverse	4.28; 7.59; 12.53	